

Schindler 5500  
Fits you.



## Key figures

<b>Capacity</b>	630 to 2'500 kg, 8 to 33 passengers
<b>Travel height</b>	Up to 150 m
<b>Door width</b>	800 to 1'400 mm
<b>Door height</b>	2'100 to 2'900 mm
<b>Drive</b>	STM Technology regenerative drive option
<b>Speed</b>	1.0 to 3.0 m/s MMR and MRL
<b>Number of floors</b>	50 floors (60 landings)
<b>Car groups</b>	Up to 8 cars expandable with PORT Technology
<b>Interior</b>	4 deco lines from functional to sophisticated or Libertà option glass panel option, bare car option
<b>Fixtures</b>	Mechanical or touch-sensitive buttons dot matrix display or TFT LCD
<b>Door types</b>	T2L, T2R, C2, C4 glass doors optional



# 4 essentials for a perfect fit. Schindler 5500

## » Space configurability

Configure the dimensions and technology of your elevator to best meet the requirements of your application. The Schindler 5500 fits your needs, making your building work by optimizing space with excellent shaft utilization.

## » Green mobility

Rely on the latest technology. The Schindler 5500 helps you lower your building's carbon footprint by using energy more efficiently – with regenerative drives for sustainable operation.

## » High-level performance

Enjoy the faster and smoother ride. The new developments in traction media and control systems give you not only more speed, but also let you handle more passengers and goods providing optimal ride quality.

## » Freedom of design

Create the look and feel of your elevator just the way you always imagined it. Our design lines give you the freedom of choice – from preconfigured cars to your own concept, from functional to sophisticated. For full design flexibility select the Libertà option.

# Space configurability

Configure mobility the way you need it to make your building work. From the ideal space utilization and machine-room options to a perfectly fitting car and the smooth flow of people and goods.

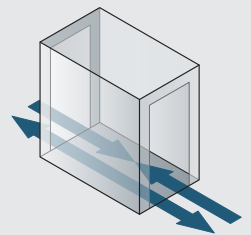
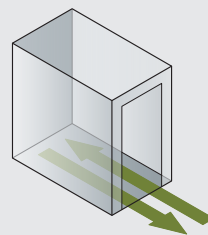
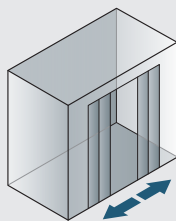
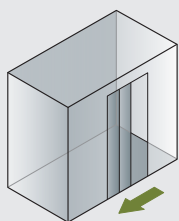
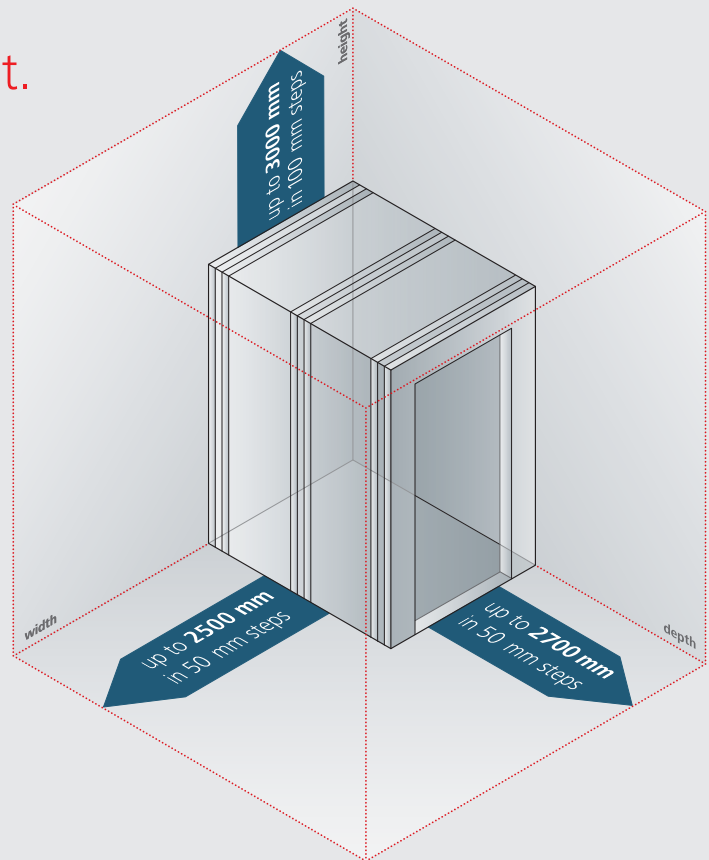
## More options for a better fit.

### The product that always fits

You name the dimensions that are in line with your ideas and the requirements of your building.

The Schindler 5500 fits:

- Standard car sizes are adaptable in width and depth with a maximum of 100 mm around ISO standards.
- Car height is variable in steps up to 3000 mm.
- A single modular system is able to cover different market applications such as residential, commercial and public transportation.



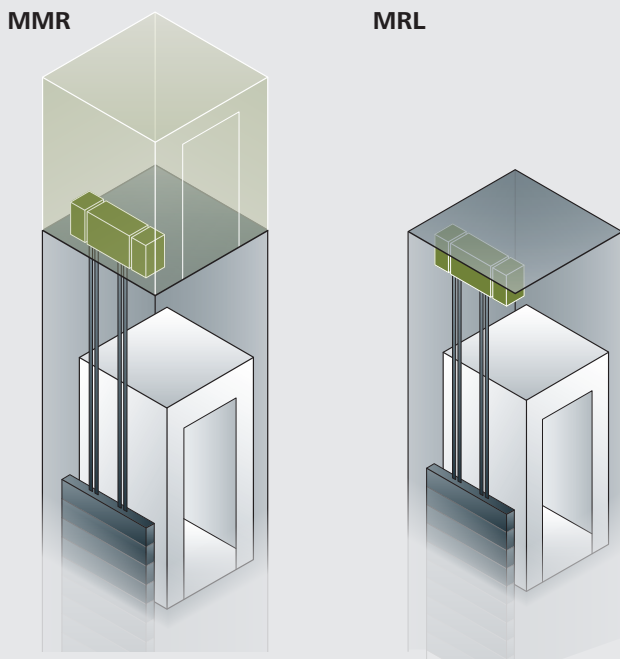
### Standard and extended door range

The large range of door widths and heights (width 800 mm up to 1400 mm, height up to 2900 mm) adapts to code and building requirements. Doors come in different finishes, including glass panels.

### From unidirectional to bidirectional

Cars with smoothly opening doors on both sides are just one example that helps you efficiently handle the traffic in your building.

## Building integration made easy.

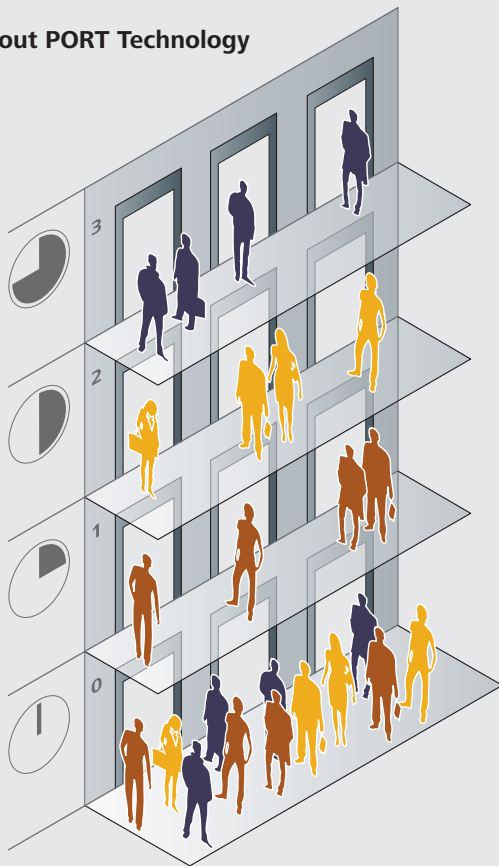


### MMR and MRL layout

Depending on the dimensions of the shaft, there are mini-machine-room (MMR) and machine-room-less (MRL) solutions for the Schindler 5500. The flexible positioning of the counterweight also provides more options for perfect space utilization, maximized rentable space and lower building costs.

## Powerful performance. Smooth travel.

### Without PORT Technology



### With PORT Technology



### Brainpower for your building

Schindler PORT Technology uses a revolutionary traffic management system that brings people to their destinations faster than any other elevator control while reducing the number of intermediate stops. The passengers' only requirement is to

simply communicate their identity and destination. Schindler's PORT Technology takes care of the rest by planning and executing a seamless journey, using the optimal route that takes the shortest possible time to complete.

# Green mobility

Keep energy consumption to a minimum by using power more efficiently. The new technological advances of the Schindler 5500, such as regenerative drives, new traction media, and carefully selected materials, ensure an ecologically sound solution.

## From savings to sustainability.

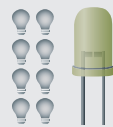
up to 50%



### Clean Drive Technology

Thanks to the optional high-efficiency permanent magnet drive and optional recuperating frequency converter the Schindler 5500 uses almost 50% less energy than its predecessor. With the optional clean PowerFactor 1 technology, the drives are even able to produce energy that can be fed back into the electricity grid immediately.

up to 20x



### LED lighting

LED lights have an extremely long service life. They last up to 20 times longer than standard light bulbs while consuming less energy. A bright solution for passengers and the environment.

up to 50%



### Optimized motor and traction media

Big in performance, compact in size. Efficient in travel, effective in energy usage. The new drive and traction configuration weighs up to 50% less than its predecessor while using less oil. Even a non-oil system option is available.



### From efficiency to earning credits for green building.

All around the world, buildings are rated for their energy efficiency. Within this framework of green building certificates the focus is also directed to the performance of elevators. With Schindler 5500, able to reach class A according to VDI 4707-7 standard\*, we not only achieve high ratings for energy efficiency, but also help you earn high scores and thus more credits for your green building certificates.

\* Calculation according to the VDI 4707-1 standard regarding the energy efficiency of lifts, established by the Association of German Engineers (VDI). The VDI 4707-1 standard classes range from "A" to "G", with class "A" being the most energy efficient class. The given result is based on calculation for a Schindler 5500, equipped with optional equipment (recuperating frequency converter and a permanent magnet drive), in VDI usage category 3, with a load of 1000 kg, a travel height of 21 m and a speed of 1,6 m/s. The VDI classification and energy consumption of individual installations may deviate from this result, e.g. due to different or additional customer options and/or different configuration.

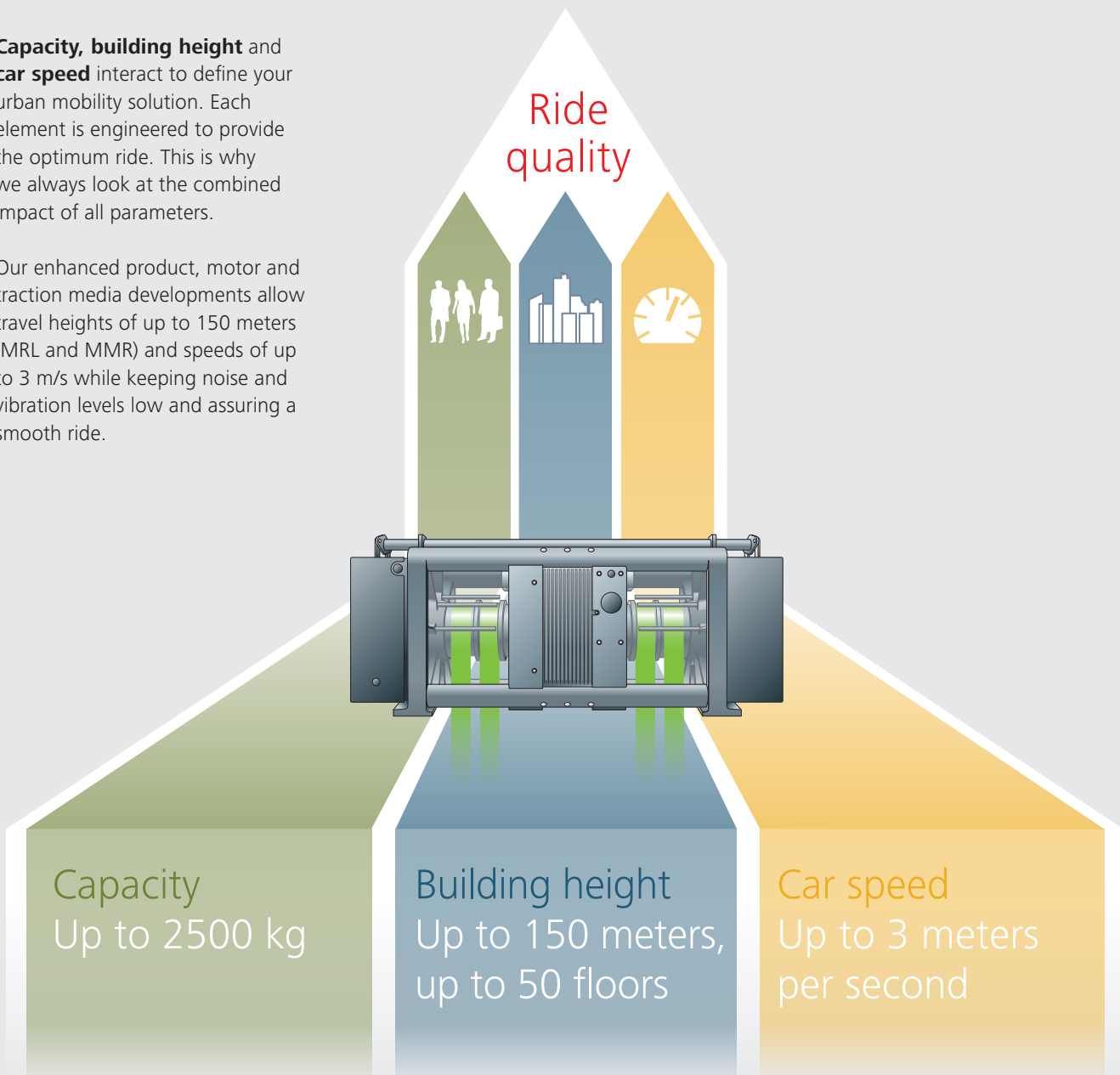
# High-level performance

The Schindler 5500 offers an excellent ride experience for the passenger. The wider range of MRL residential and commercial applications as well as new drive and traction developments make it a hallmark in modern urban mobility. High travel height, fast speeds and improvements in range of load and noise reduction technology position the Schindler 5500 as a prime elevator.

## More options for a better ride.

**Capacity, building height** and **car speed** interact to define your urban mobility solution. Each element is engineered to provide the optimum ride. This is why we always look at the combined impact of all parameters.

Our enhanced product, motor and traction media developments allow travel heights of up to 150 meters (MRL and MMR) and speeds of up to 3 m/s while keeping noise and vibration levels low and assuring a smooth ride.





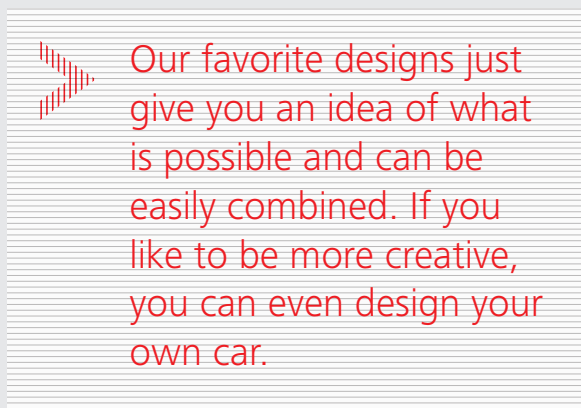
# Freedom of design

Create the look and feel you like. Combine colors, materials, lighting, mirrors, handrails and fixtures to achieve the ambiance that fits both your ideas and your building. Choose from one of our four interior design lines or create the car to your own taste with the Libertà option.

## Add personality to your elevator

«Navona», «Times Square», «Park Avenue» and «Sunset Boulevard» – our four design lines offer a wide range of decoration options. Choose your design to match your architectural concept and ideas. Provide a unique ride experience with fresh colors, distinctive patterns and high-quality materials.

For detailed information on our four design lines see our separate design lines brochure.



### Note

Specifications, options and colors are subject to change. All cars and options illustrated in this brochure are representative only. The samples shown may vary from the original in color and material.

## Navona – functional and durable

Provide clarity and solid comfort to your car with this robust design line. Fresh colors, a contrasting rear wall, the option of three different floors or a bare floor make Navona the right choice for residential applications. Stainless steel can be added to rear and side walls. Navona's interior stands for long lasting functionality right where it is needed.

## Times Square – modern and versatile

Determine your modern look. Choose from warm or cool colors to create a fresh look or combine the options to enhance contrast for more depth. Use a bare car option to create your style and taste. Times Square adds distinctive features to any public, commercial or residential building.

## Park Avenue – sophisticated and elegant

Discover pure elegance with back painted glass walls or choose wood laminate to create a more contemporary ambiance. The optional wave design, a rounded transition from ceiling to rear wall, gives your car a unique appearance. An additional highlight is a gold or silver shimmer from our metallic glass collection or a brushed bronze or satinated grey finish on stainless steel. Matched lighting perfects the stylish design of this elevator – an ideal fit for representative buildings like high-end residential, hotels and offices.

## Sunset Boulevard – inspirational and full of character

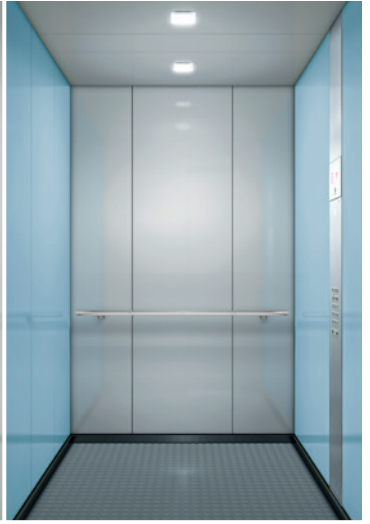
Aim high for passenger excitement in upmarket locations like hotels, clubs and restaurants. The combination of premium quality materials, captivating patterns and splashy color gradients make this car a unique experience. Lighting and ceiling concepts create a fascinating atmosphere. Make your elevator become your stage.

## Libertà Option

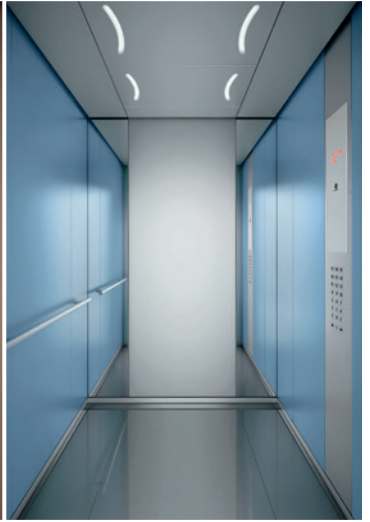
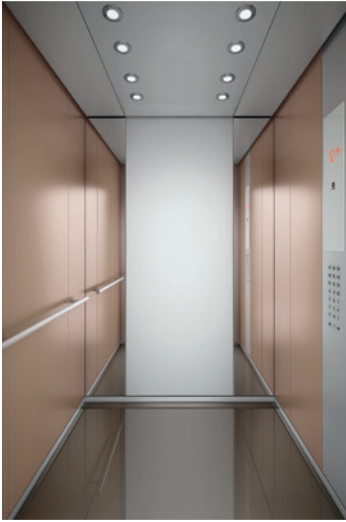
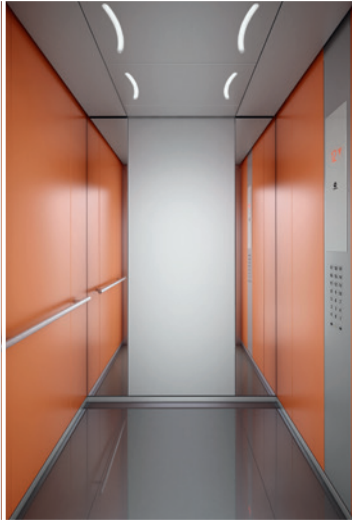
Do you want to put yourself in the design director's chair? With the Libertà option, enjoy the possibility to create your own car interior with a free choice of combinations. Select the ceiling, combine any wall and floor colors from our 4 distinct décor lines and choose your options. The bare car option allows up to 50 % of the car's rated capacity as additional weight giving you full freedom for customized interiors.



Navona



Times  
Square



Park  
Avenue



Sunset  
Boulevard



# Go beyond the expected. Get to the heart of design.

## Endow your cars with a signature ambiance

Deliver uniqueness to your building by customizing the car in line with your overall design concept. Start with one of the pre-configured options of the Schindler 5500 and create exactly the ambiance you desire. Add matching colors and lighting options or improve the feeling of security by implementing glass elements. There are almost no limits as you can add up to 50% of extra interior weight to the rated passenger load.

## Back painted glass

By putting color behind safety glass, you create a high gloss and vibrant effect that adds a pleasant ambiance to your car. In order to make the back painted glass walls perfectly fit the overall appearance of the building, you can either choose from pre-selected colors or optionally select any NCS (Natural Color System) color.

## Glass doors and glass walls

Add eye-catching transparency to your car. The wide range of glass doors helps you to suit the application. Glass panels can either be installed to rear and side walls of the car for maximized visibility and security or can be combined with other car interior materials from the Times Square, Park Avenue and Sunset Boulevard design line. Frames for glass panels are available in two finishes.

For detailed information on back painted glass, glass options and digital prints see our separate decor lines brochure.

## Digital print on stainless steel

Create ambiance not only with colors but with eye-catching patterns printed on stainless steel. Choose clearly structured geometrical forms or bold organic designs. Select stainless steel beautifully enhanced with a bronze or gray shimmer. No matter the size of your car, digital decoration patterns always look stunning.

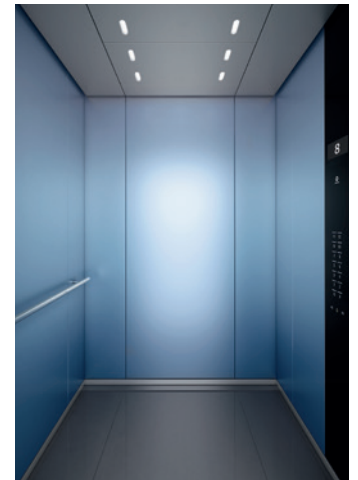
## Digital print on satinated glass

Gorgeous and intense colors, emphasized through satin glass for more elegance. From atmospheric blue-red to warm gray-beige color gradients, this design allows you to create a fascinating ambiance and an unforgettable ride experience.



### Times Square with glass walls

Ceiling: Stainless steel Lucerne Brushed  
Walls: Glass panels  
Floor: Black artificial granite  
Lighting: LED Indirect  
Frame finish: Lucerne Brushed  
Car operating panel: Linea 100



### Sunset Boulevard with digital print on satinated glass

Ceiling: Stainless steel Lucerne Brushed  
Walls: New York Sunset  
Floor: Artificial granite black  
Lighting: LED Dash  
Car operating panel: Linea Vetro





**Park Avenue with  
back painted glass**

Ceiling and rear wall: Stainless  
steel Lucerne Brushed  
Walls: Shanghai Red  
Floor: Artificial granite Black  
Lighting: LED spot lights  
Car operating panel: Linea 300



# A perfect outfit with matching accessories.

## Operating panels and options

### Outfit your elevator with style

Our operating panels and options, such as handrails, mirrors and lighting, suit your chosen decor to give your elevator the perfect finish – down to the smallest detail.

For a complete overview of all fixtures and options, see our separate decor lines brochure.

### Operating panels

Make your elevator easy to operate for all passengers. Energy efficient operating panels all come in high quality materials and finishing. As an option, elegant full-glass fixtures provide the finishing touch to the car interior.

High-resolution and easy-to-read indicators make the ride even more enjoyable.

### Mirrors

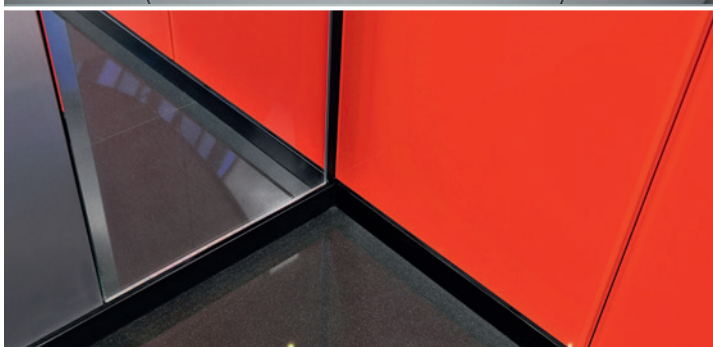
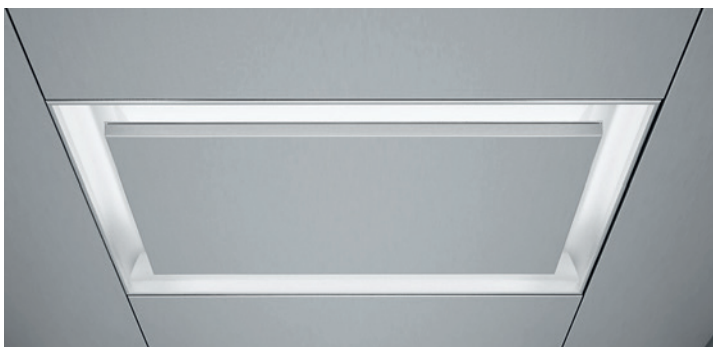
Mirrors always add a special sense of space to rooms and buildings. In order to give your car more appeal and depth, one sidewall or the rear wall can be provided with a full-height safety-glass mirror.

### Handrails

Even though your elevator travels smoothly, handrails convey a feeling of security. Stainless steel handrails match the interior and shapes of your car and can be mounted to the side and rear walls. Illuminated handrails and skirting enhance the overall ambience of the car as well.

### Lighting

A selection of different lighting options lets you add the right atmosphere to your elevator – from warm spot light to ambient indirect lighting. You can either choose from one of the lighting solutions that comes with our interior designs or you can opt for a custom solution.





# Linea 300

2



6  
5  
4  
3  
2  
1  
0



# Linea Vetro

8



18	19	20
15	16	17
12	13	14
9	10	11
6	7	8
3	4	5
0	1	2

Buttons with symbols: a crossed hammer and sickle, a yellow bell, and a double arrow

2

1

0



8





# Create the ideal look for your project.

## High-end residential buildings

With its various options for interior design, the Schindler 5500 adapts seamlessly to the architectural concept of your residential building. Further improvements in energy saving and noise reduction make the Schindler 5500 your elevator of choice.



### Office and commercial buildings

The Schindler 5500 is the perfect fit for high-traffic environments and can be easily installed in larger groups. It is also available with glass cars which offer passengers a panoramic view. Equipped with proprietary PORT Technology, the Schindler 5500 becomes a highly efficient mobility system for your office and commercial buildings.





# Create the ideal look for your project.

## Healthcare applications

The Schindler 5500 is the perfect solution for healthcare facilities. Its excellent ride and leveling accuracy ensures a safe and comfortable ride for patients. With Indirect lighting as standard and an interior that is easy to clean the Schindler 5500 has thought of the most important requirements of a healthcare facility. A priority control option is available and the Schindler 5500 is Schindler Direct ready. The monitoring and diagnostic service allows to track performance and pro-actively adjust the maintenance routine to secure availability.





### Service applications in Retail, Hotels, Offices and Healthcare

Robust, reliable and accurate is what a service elevator needs to be. The Schindler 5500 can be equipped with stainless steel, bumper rails and a checker plate floor to withstand the rigors of operation. Its leveling accuracy gets service trolleys easily in and out. With a flexible range of car sizes and the ability to serve up to 2500kg the Schindler 5500 is perfectly suited for service applications.



# Schindler 5500 MRL

## Planning Data

All elevators placed on the market as of 1st September 2017 must comply with EN 81-20\*. Please contact us for any further questions.

Load capacity			Passengers max.			Speed			Travel height			Number of stops max.			Number of entrances			Door			Hoistway																																																																																																																																																																																																																																																																																																																																																																																																																																																																																																																																																																																																																																																																																																																																																																																																																																																																																																																																																																																																																																																																																																																																																																																																																																																																																																																																																																																																																																																																																																																																	
GQ			VKN			HQ			ZE			ZKE																																																																																																																																																																																																																																																																																																																																																																																																																																																																																																																																																																																																																																																																																																																																																																																																																																																																																																																																																																																																																																																																																																																																																																																																																																																																																																																																																																																																																																																																																																																																										
kg			m/s			m																																																																																																																																																																																																																																																																																																																																																																																																																																																																																																																																																																																																																																																																																																																																																																																																																																																																																																																																																																																																																																																																																																																																																																																																																																																																																																																																																																																																																																																																																																																																																

GQ Load capacity  
VKN Speed  
HQ Travel height

BK Car width  
TK Car depth  
HK Car height

T2 Telescope door  
C2/C4 Center-opening  
telescope door  
BT Door width  
HT Door height

BS Shaft width  
TS Shaft depth  
HSG Shaft pit depth  
HSK Clear overhead below lifting beam  
HSK<sup>(1)</sup> Standard headroom, fixed balustrade 1100 mm  
HSK<sup>(2)</sup> Reduced headroom, foldable balustrade 700 mm where code allows (country specific)

H<sub>Emin</sub> = HT + 450 mm  
H<sub>K</sub> = HT + min. 100 mm

Flooring (HKZ): above values based on a maximum floor thickness of 40 mm

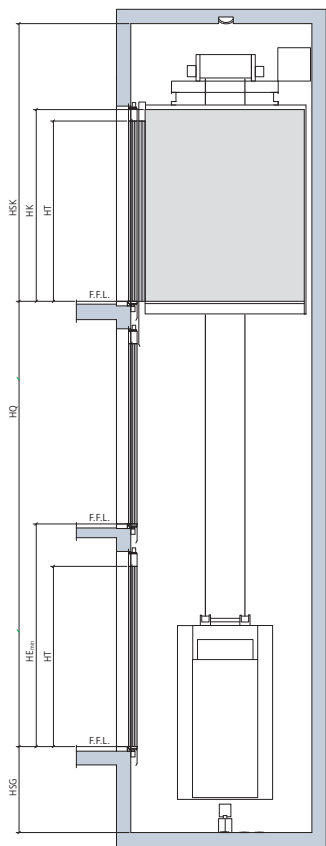
\* EU type examination in accordance with Lifts Directive (Directive 2014/33/EU), based on EN 81-20

\*\* > 44 stops requires destination control/PORT

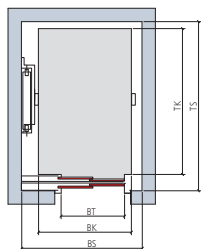
### Remarks:

- Our equipment is designed to withstand a temperature range of 5 to 40°C
- To achieve a suitable temperature for service personnel, the shaft temperature should be kept within the range of 5 to 35°C
- The humidity in the shaft should not exceed 90% in monthly average and 95% in daily average without condensation
- Table of dimensions as per EN 81-20/50, for other country codes and specific requirements (eg. EN 81-72 2015 fire fighter elevator or EN 81-77 seismic elevator), please contact our local sales office
- Shaft dimensions width & depth are based on clear dimension +/-25mm horizontal tolerances over the total shaft height (for shaft height > 80 m, please consult your sales representative)
- All given information is for general reference and planning. For specific construction detail, please contact our local sales office

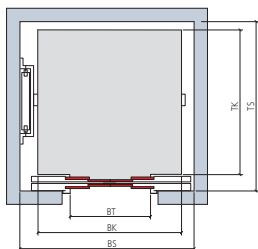
# Height and plan view



One-sided entrance



One-sided entrance  
telescope door



One-sided entrance  
Center-opening telescope door

For additional information, such as proposals, construction plans, and pricing, please contact our local sales office.

F.F.L. = Finished Floor Level

# When vision meets discipline. Schindler partners with Solar Impulse.



Schindler is a main partner of **Solar Impulse**, the zero fuel airplane aiming to fly around the world propelled only by solar energy.

This publication is for general informational purposes only and we reserve the right at any time to alter the product design and specifications. No statement contained in this publication shall be construed as a warranty or condition, expressed or implied, as to any product, its fitness for any particular purpose, merchantability, quality or shall be interpreted as a term or condition of any agreement regarding the products or services contained in this publication. Minor differences between printed and actual colors may exist.